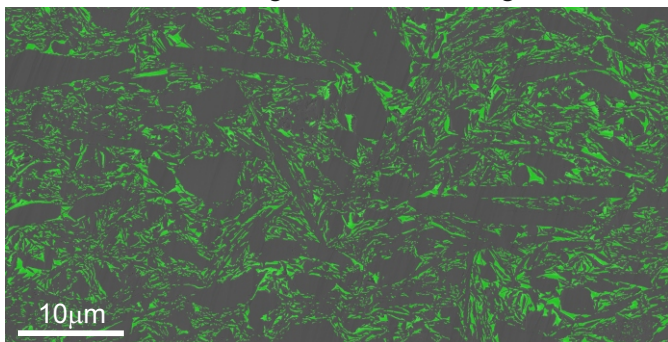
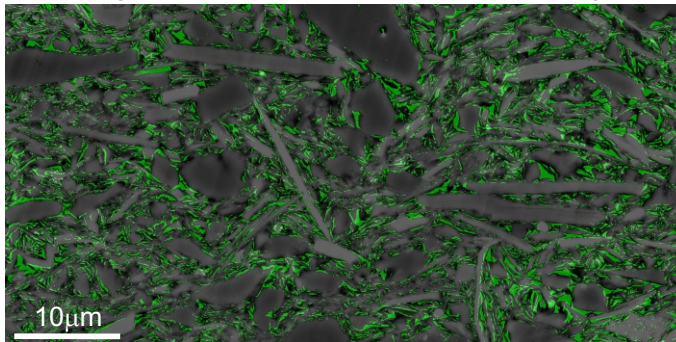


SN-23 (U1480G-14G-2W-68-69, 871.55mbsf)

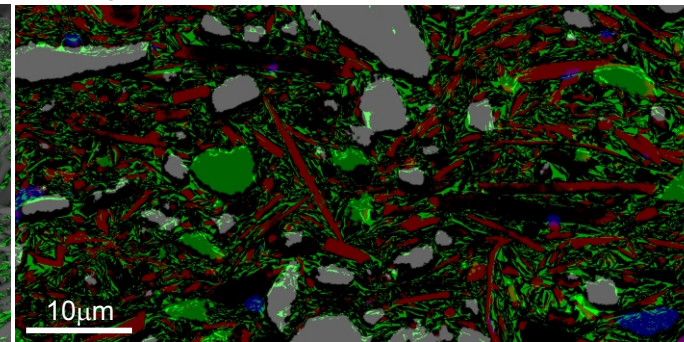
Pore segmented Se2 image



Segmented pores overlaid on BSE image

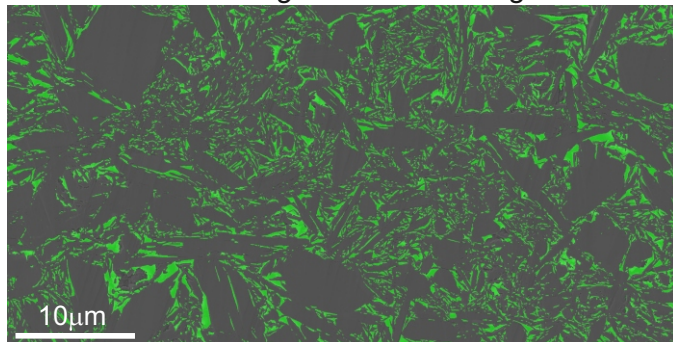


Segmented pores overlaid on phase map

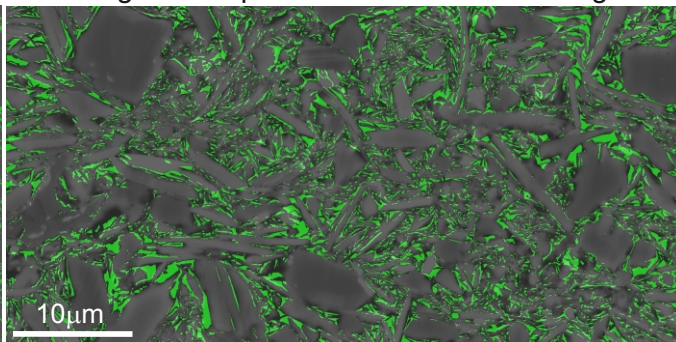


SN-26 (U1480G-30R-2W-75-77, 1027.91mbsf)

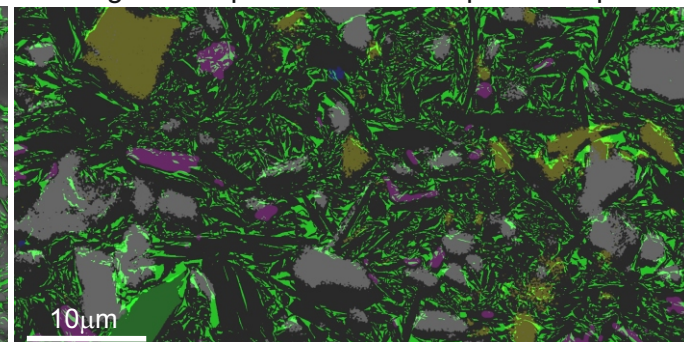
Pore segmented Se2 image



Segmented pores overlaid on BSE image

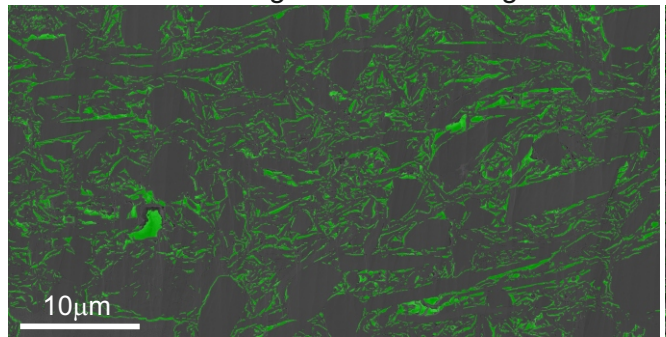


Segmented pores overlaid on phase map

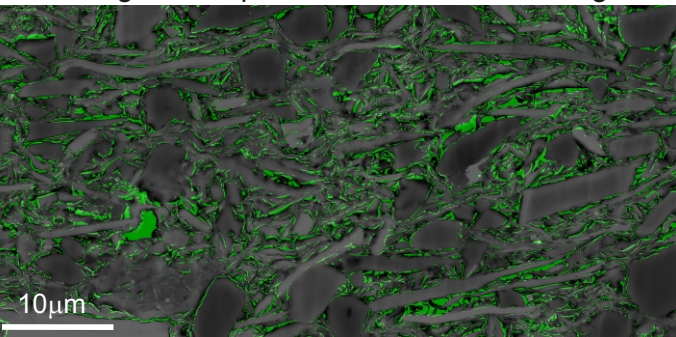


SN-33 (U1480G-59R-1W-107-109, 1299mbsf)

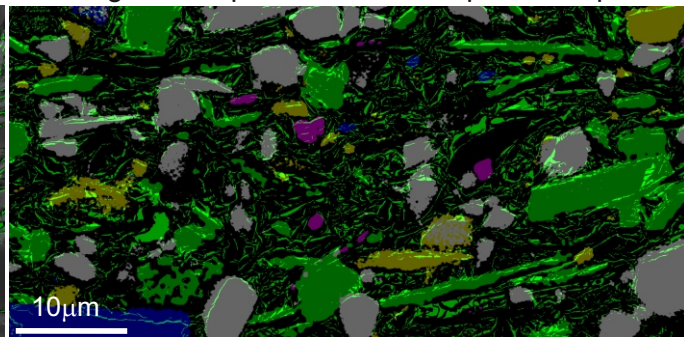
Pore segmented Se2 image



Segmented pores overlaid on BSE image



Segmented pores overlaid on phase map



Supplementary data-6: SE2, BSE images and phase maps of the samples SN-23; SN-26 and SN-33 respectively. Green-colored segmented pores overlaid on BSE mosaic and phase maps. In the phase maps, grey= Quartz; yellow=feldspar; Red=mica; pink=pyrite; blue=calcite.